

## Groups of Similar Cells Form Tissues

Groups of similar kinds of cells form **tissues**. In animals, groups of muscle cells that work together make up muscle tissue. Muscle tissue allows an animal to move.

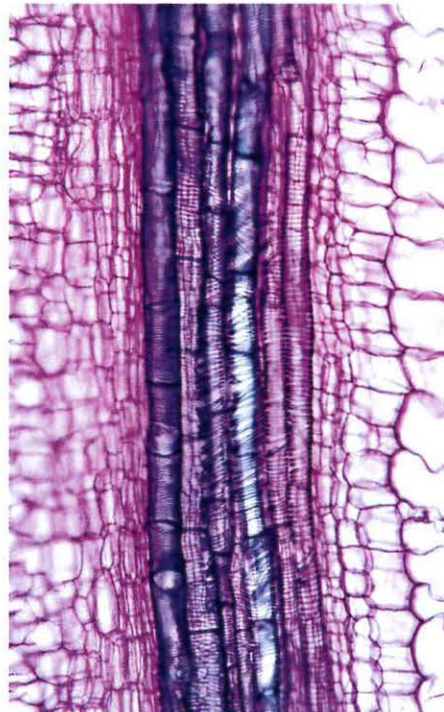
### Vocabulary

**tissue, n.** a group of similar cells joined together

Bone tissues are made of bone cells. Bones protect soft parts inside an animal and help to add a rigid structure to give an animal shape. Connective tissues help hold different body parts together. Each of these types of tissues is made of a group of similar cells.

Plants have several tissues too. Some tissue forms the outside of a plant—its protective layer. Another kind of tissue transports water and nutrients to the plant's stems and leaves. Yet another type of tissue forms the growing parts of the plant at the tips of stems and roots. Each of these types of tissues is made of a group of similar cells.

In all living things, cells make up tissues. This pattern of structure is what scientists call *biological organization*.



Tissues inside plants form tube-like structures. This type of tissue carries water from the roots, through the stem, and to the leaves.